

# Family of kidney transplant education programs

Developed in collaboration with Dr. Amy Waterman, one of the nation's leading experts in kidney transplant education, the Explore Transplant & Living Donation tailored education programs help kidney patients and their loved ones learn about their disease and treatment options. These initiatives utilize Dr. Waterman's gold standard research with our evidence based health literacy practices to provide the most effective transplant and living donation education available.



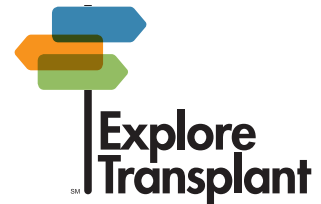
## Explore Transplant

### Patient education

Our Explore Transplant education materials, available in both English and Spanish, helps patients and their loved ones learn about kidney disease treatment options. Patients learn answers to common questions such as "Why did my kidneys fail" or "Should I stay on dialysis or get a transplant?" At the end of this program, patients use a guide to help them explore what next steps are right for them.

### Provider trainings

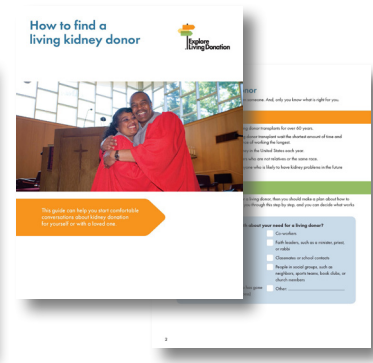
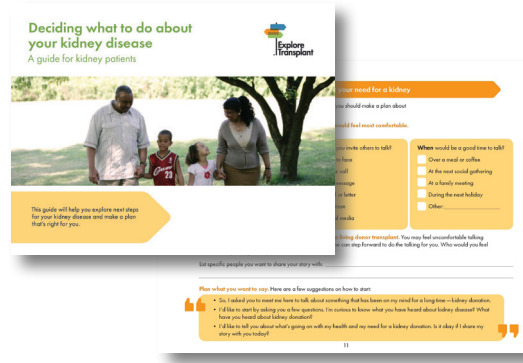
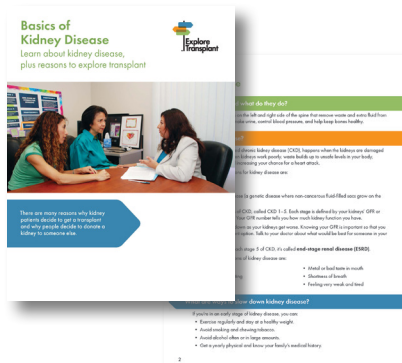
Through our Explore Transplant trainings, we have helped thousands of health care providers nationwide become more confident transplant educators. Upon completing our trainings, attendees are able to have more effective transplant discussions with their patients, experience an increase in transplant referrals, and can better support individuals learning about living donation.



## Explore Living Donation

### Patient and donor education

Our Explore Living Donation education helps patients and their loved ones learn more about the benefits and risks of living donation. This program also provides many strategies that can help patients and their loved ones find living donors and support each other along the living donation journey.



## Digital resources

All of the following resources are accessible by computer, tablet, or phone.

### Living Donation Storytelling Project

Through this online library, users can view real-life stories from patients, living donors, friends, and family members. Users can search for stories by geographic location, race, ethnicity, gender, and whether they are a patient or donor. This search function allows users to find stories that reflect their interest and learn from others' experiences with transplant.

The platform also allows users to create their own video about their experience, using guided prompts a computer or mobile device.

This library also promotes living donor kidney transplants in communities that traditionally haven't had access to living donor kidney transplant information.

Learn more: [livingdonationstories.org](http://livingdonationstories.org)



### My Kidney Transplant & Paired Donation Coach

My Kidney Transplant & Paired Donation Coach is an interactive series of animations designed to help kidney patients learn about kidney transplant and paired kidney donation. These videos educate about treatment options that are available so patients can make informed decisions that are right for them.

Our animated coach Tracy talks about kidney disease and the different treatment options, including the risks and benefits of kidney transplant and donation, the transplant/donation evaluation and surgery processes, and related costs. She will also explain why people choose to get a transplant or donate a kidney, and some common myths related to the process.

Learn more: [explorettransplant.org/my-kidney-transplant-paired-donation-coach](http://explorettransplant.org/my-kidney-transplant-paired-donation-coach)

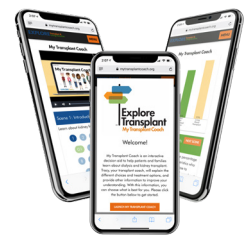


### My Transplant Coach

My Transplant Coach is a web-based interactive decision aid to help kidney patients and families learn about treatment options using animated storytelling and personalized information. Tracy, the Transplant Coach, explains the benefits and risks of each treatment option, including staying on dialysis or pursuing a deceased or living donor transplant.

Users can enter key demographic and health characteristics to create an outcomes report showing how long patients like them are expected to live with each treatment option. After completing the modules, users can print and share the tailored report with their healthcare team.

Learn more: [mytransplantcoach.org](http://mytransplantcoach.org)



For more information, please contact Christina Goalby, at (314) 361-9400 or [cgoalby@healthliteracy.media](mailto:cgoalby@healthliteracy.media)

[www.healthliteracy.media](http://www.healthliteracy.media)

[www.explorettransplant.org](http://www.explorettransplant.org)